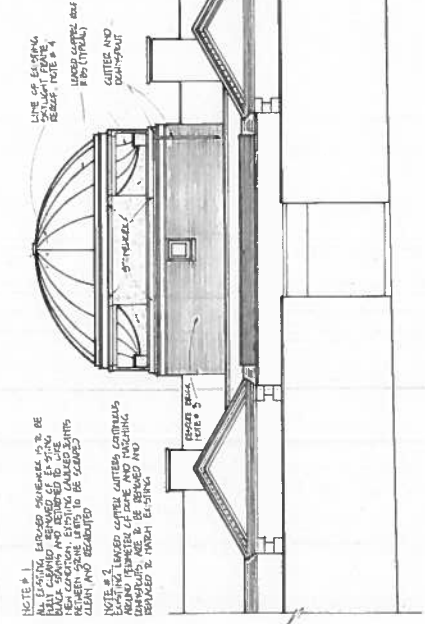


NOTE # 1
 ALL EXISTING, ENLARGED, AND NEW WORK IS TO BE
 CONSTRUCTED IN ACCORDANCE WITH THE ILLINOIS
 BUILDING CODE AND REFERRED TO THE
 IBC 2009. EXISTING LAMPED GLASS PARTS
 ARE TO BE REPAIRED OR REPLACED
 WITH NEW GLASS.

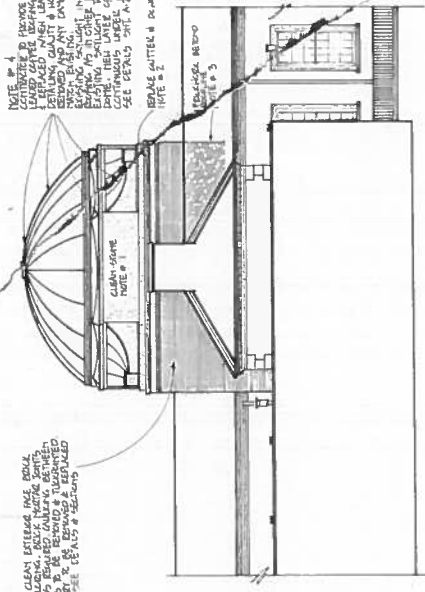
NOTE # 2
 EXISTING LAMPED GLASS PARTS CONTAINING
 LEAD ARE TO BE REPAIRED AND
 REPAIRED TO MATCH EXISTING.



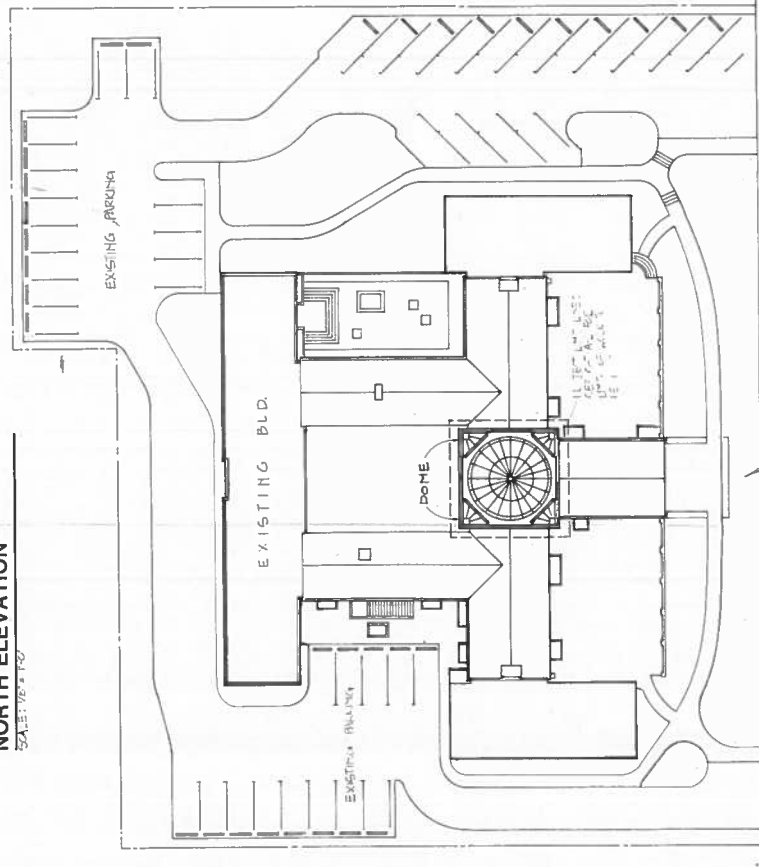
NORTH ELEVATION
 SCALE: 1/8" = 1'-0"

NOTE # 3
 TO MAINTAIN A PRISTINE EXTERIOR WALL DOCK
 OF BRICK AND CONCRETE, EACH PARTIAL UNIT
 OF BRICK SHALL BE REPAIRED TO MATCH
 THE ORIGINAL UNIT. ALL REPAIRS SHALL BE
 MATCHED TO THE ORIGINAL UNIT IN
 COLOR, GRAIN, AND TEXTURE. SEE
 DETAIL # 1 FOR REPAIR DETAILS.

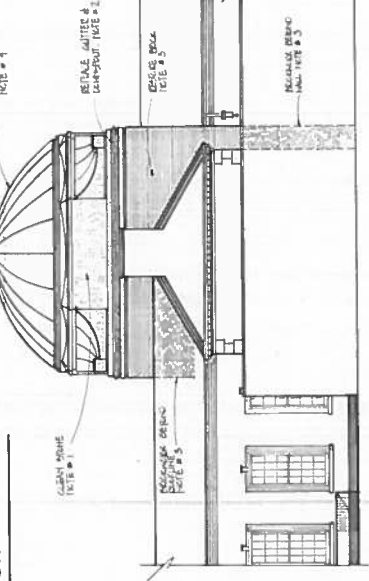
NOTE # 4
 TO MAINTAIN A PRISTINE EXTERIOR WALL DOCK
 OF BRICK AND CONCRETE, EACH PARTIAL UNIT
 OF BRICK SHALL BE REPAIRED TO MATCH
 THE ORIGINAL UNIT. ALL REPAIRS SHALL BE
 MATCHED TO THE ORIGINAL UNIT IN
 COLOR, GRAIN, AND TEXTURE. SEE
 DETAIL # 1 FOR REPAIR DETAILS.



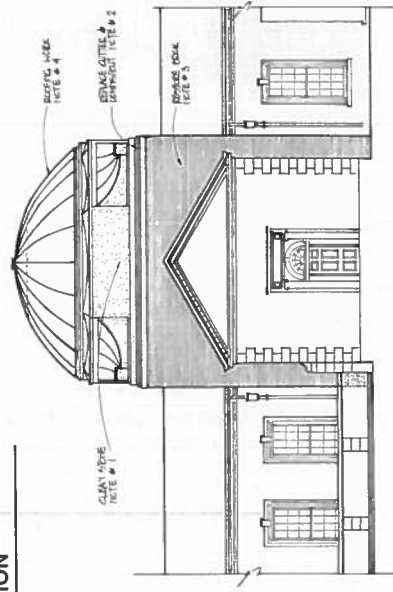
EAST ELEVATION
 SCALE: 1/8" = 1'-0"



SITE / ROOF PLAN
 SCALE: 1/8" = 1'-0"



WEST ELEVATION
 SCALE: 1/8" = 1'-0"



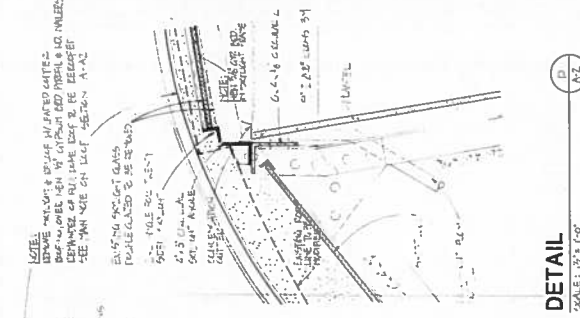
SOUTH ELEVATION
 SCALE: 1/8" = 1'-0"

NOTE # 1
 ALL EXISTING, ENLARGED, AND NEW WORK IS TO BE
 CONSTRUCTED IN ACCORDANCE WITH THE ILLINOIS
 BUILDING CODE AND REFERRED TO THE
 IBC 2009. EXISTING LAMPED GLASS PARTS
 ARE TO BE REPAIRED OR REPLACED
 WITH NEW GLASS.

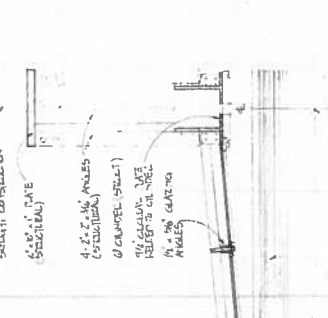
NOTE # 2
 EXISTING LAMPED GLASS PARTS CONTAINING
 LEAD ARE TO BE REPAIRED AND
 REPAIRED TO MATCH EXISTING.

NOTE # 3
 TO MAINTAIN A PRISTINE EXTERIOR WALL DOCK
 OF BRICK AND CONCRETE, EACH PARTIAL UNIT
 OF BRICK SHALL BE REPAIRED TO MATCH
 THE ORIGINAL UNIT. ALL REPAIRS SHALL BE
 MATCHED TO THE ORIGINAL UNIT IN
 COLOR, GRAIN, AND TEXTURE. SEE
 DETAIL # 1 FOR REPAIR DETAILS.

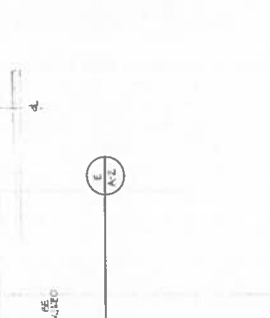
NOTE # 4
 TO MAINTAIN A PRISTINE EXTERIOR WALL DOCK
 OF BRICK AND CONCRETE, EACH PARTIAL UNIT
 OF BRICK SHALL BE REPAIRED TO MATCH
 THE ORIGINAL UNIT. ALL REPAIRS SHALL BE
 MATCHED TO THE ORIGINAL UNIT IN
 COLOR, GRAIN, AND TEXTURE. SEE
 DETAIL # 1 FOR REPAIR DETAILS.



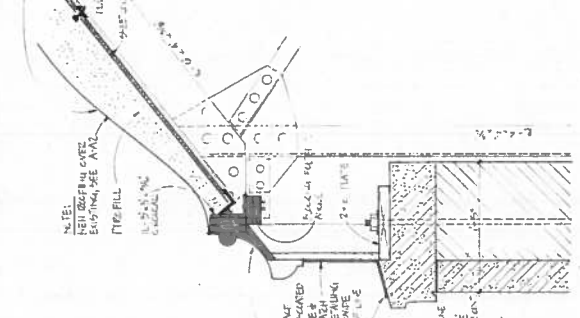
ROOF PLAN / PLATE DIAGRAM
SCALE: 1/4" = 1'-0"



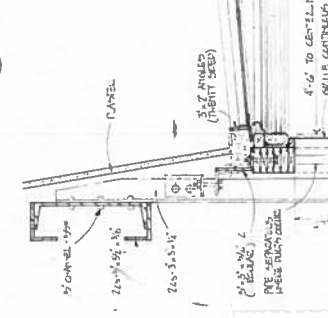
SECTION AT BEAM
SCALE: 1/4" = 1'-0"



SECTION AT TRUSS LEVEL
SCALE: 1/4" = 1'-0"



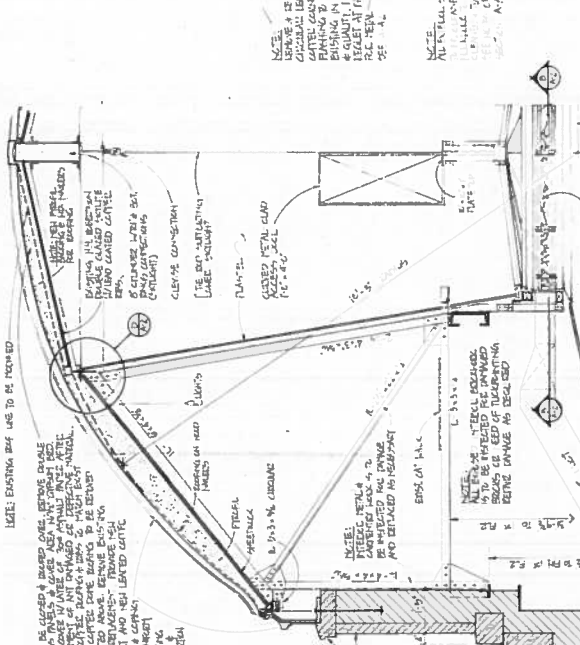
DETAIL
SCALE: 1/2" = 1'-0"



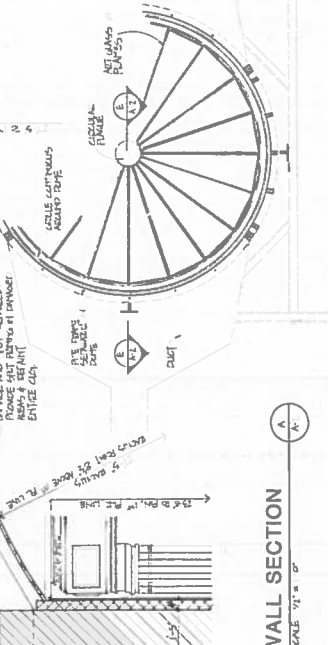
DETAIL
SCALE: 1/2" = 1'-0"



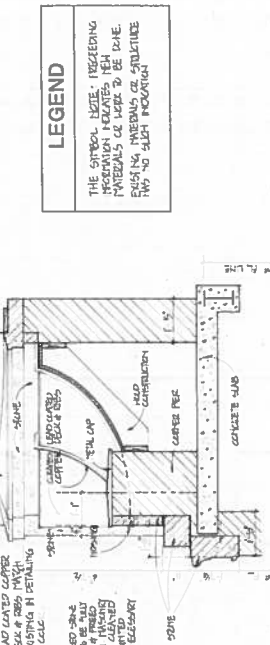
SECTION
SCALE: 1/4" = 1'-0"



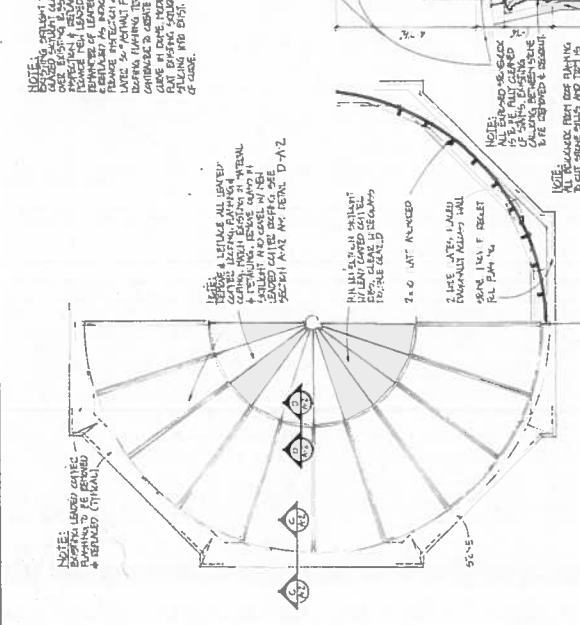
WALL SECTION
SCALE: 1/4" = 1'-0"



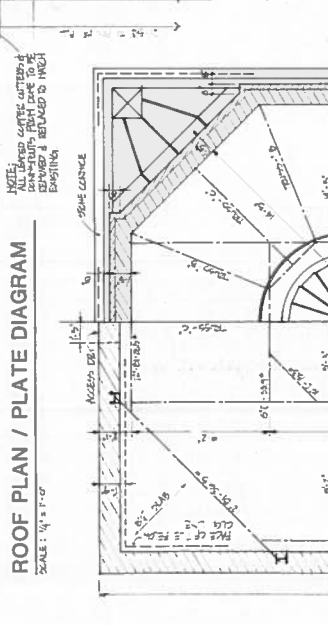
SECTION
SCALE: 1/4" = 1'-0"



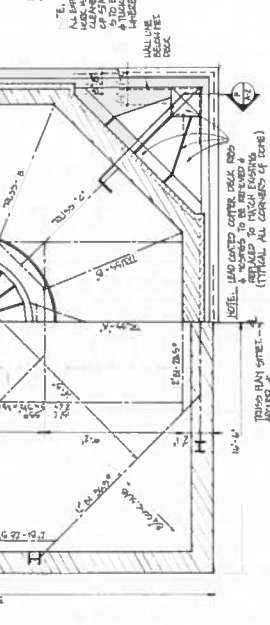
SECTION
SCALE: 1/4" = 1'-0"



LEGEND



NOTES



NOTES